

EASY CONNECT STEERING HELM

IT-03

IMPORTANT SAFETY INFORMATION IS CONTAINED IN THIS SHEET AND THE SAME MUST BE FORWARDED TO THE BOAT OWNER.

Follow these instructions for installation of IT-03 Easy Connect Steering Helms. (Refer Bezel Kit instruction sheet for mounting Bezel Kit IX90). Ensure following components are available before installation.

- # IM06 XX Steering Cables as per required length
- # Bezel Kit IX90
- # Steering Wheel
- # Engine connection kit

1) Preparation For Installation:

- # Install the Steering Helm, Bezel, and Steering wheel before installing the Steering cable. (Refer Bezel Kit IX90 installation sheet)

2) Routing Of Cable:

- # Select the routing path so as to get minimum number of bends.
- # Bends on the path should have a radius as large as possible. Ensure the cable gets minimum of 8 inch radius at the bends.
- # Sharp or frequent bends will make the Steering hard which will result in premature cable failure.
- # Support cable at regular intervals.

3) Installation Of Steering Cable:(Single Helm)

- # Locate the entry point into the helm :- Fig.2.
- # Remove the plastic sleeve covering the loose end of the steering cable and insert the free end of the cable manually in the helm till it comes in contact with the internal gear in the helm and cannot be pushed further inside manually.
- # Now rotate the steering wheel so as to draw the cable fully into the helm.
- # Continue turning the steering wheel until the conduit cap of the cable aligns with the hole refer :- Fig.2.
- # Tighten the screw using torque of 52 inch/lbs to lock the cable to the helm (Part B in :- Fig2).

4) CHECKING THE STEERING SYSTEM:

- # Check the system installation by rotating the steering wheel. Clockwise rotation should move to starboard and Anti-Clockwise rotation should move to the port.
- # The cable movement direction should correspond as per the figure!
- # Check the entire Steering System after first two hours of running for loose bolts, nuts, and fasteners.

5) PREVENTIVE MAINTENANCE :

- # Steering system should be serviced every 30 days when in sea water and every 90 days when in fresh water.
 - o Check all metal parts for corrosion.
 - o Check the cable for damaged conduit.
 - o Check for loose bolts, nuts & fasteners.
- # Replace all corroded parts.
- # Replace cable if damaged.
- # Grease all exposed parts with marine grease.

6) IMPORTANT :

- # Read and follow the instruction carefully.
- # Use the supplied part as elaborated in the instruction sheet.
- # Multiflex is not responsible for improper installation or for use of parts other than those supplied in the assembly.

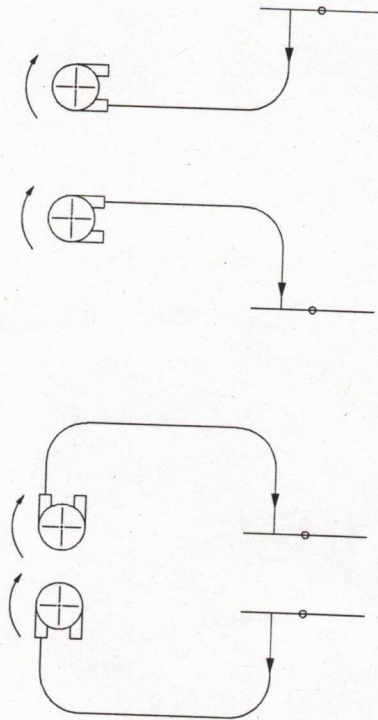


Figure.1