



Whale Gusher® 10 MK3 Pump Models: BP3708 and BP3740

READ CAREFULLY BEFORE INSTALLATION AND USE

To the Fitter: Check that the product is suitable for the intended application, follow installation instructions and ensure operating instructions are passed on to the end user.

To the User: Read the instructions carefully. (See parts diagram)

APPLICATION

This bilge pump is designed exhaust standing water. Output capacity depends on installation conditions and pumping rate. Users should be aware that capacity may not be sufficient to cope with rapid influx of water. If it is intended for any other purpose or with any other liquid, it is the users responsibility to ensure that the pump is suitable for the intended use and, in particular, that the materials are fully compatible with the liquids to be used. With all applications it is important that a system of safe working practice is applied to installation, use and maintenance.

INSTALLATION

The Gusher 10 is designed for mounting on or through deck, or on or through bulkhead. The handle can be fixed in four different positions relative to the inlet and outlet (see Fig. 1)

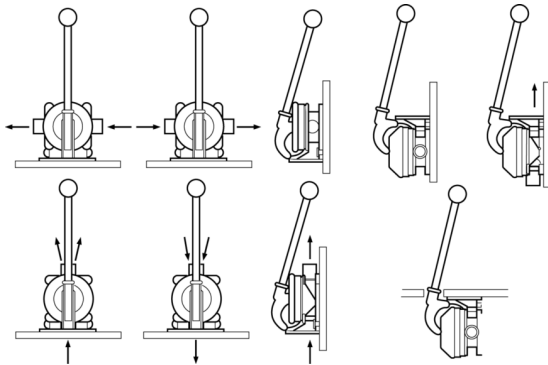
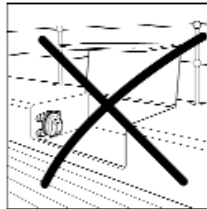


Fig. 1 - Mounting arrangements for a standard model

To Reposition Handle::

- Slacken wormdrive clip and remove diaphragm
- Undo the bolts from bracket and rotate body to new position relative to the fork and diaphragm. Note: Inlet and outlet are always at 180 to each other
- Reassemble bolts, washers and securing brushes in bracket and tighten

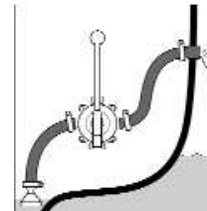
Select a suitable position free from obstructions where the pump can be operated efficiently and comfortably



Avoid installations which require a cockpit locker to be opened in order to operate the pump.



To minimise pumping effort, site the pump halfway (in height) between the strumbox / strainer and hull outlet



To ensure good priming and flow, avoid sharp bends in pipework and fit a Whale strumbox/strainer (incorporating a non-return valve) which prevents the end of the hose sucking against a flat surface and allows the water level to be reduced to a minimum.

Ensure that the pump is installed to allow easy access for servicing.

For Mounting On Deck/Bulkhead:

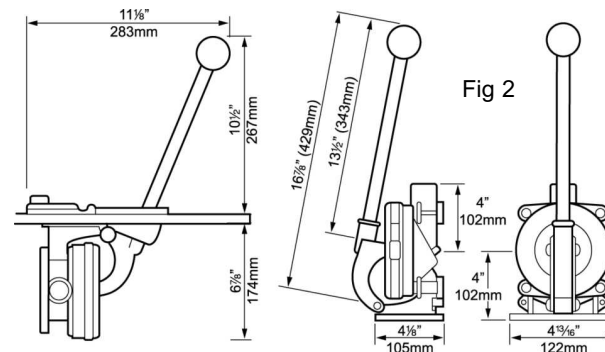
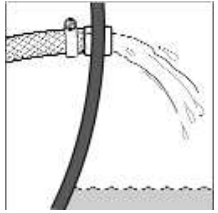


Fig 2

- Use pump as a template, mark off and drill four 1/4" (6mm) holes.
- Check flow direction and secure the pump with 1/4" (6mm) bolts.
- Attach 1 1/2" (38mm) smooth bore reinforced hose with stainless steel worm drive hose clips. Tighten to prevent air leaks
- With thru-hull discharge, make sure that the discharge point is well above the water line.
- Check the installation for air leaks, correct priming and discharge



For Mounting Underdeck or Thru Deck/Bulkhead

Three deckplates available - see accessories

- Using template mark off the 6 holes for the mounting and cut out the hole for the pump handle. Round off top edge of large hole as shown in fig. 3.

Deck fitting for Gusher Pumps (Half sectional elevation of deck fitting, pump and bracket)

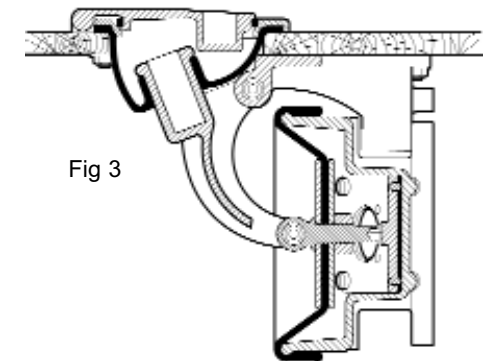


Fig 3

- Minimum deck thickness required is 1/4" (6mm). For thinner decks use a backing plate of suitable thickness so that the backing plate plus the deck is at least the minimum thickness and no greater than 1" (25mm). Bond the backing plate to the deck. If using Deck plate DP3804 the minimum deck thickness is 1/2" (13mm)
- Position the pump under deck and check flow direction. Work the rubber gaiter up through the hole until its flange rests on the deck. Secure the 6 1/4" (6mm) countersunk mounting screws provided.
- As points 3 - 5 of previous instructions.

OPERATION

The Gusher 10 ensures efficient throughput with an easy pumping action. Full even strokes will obtain the best results. The detachable handle is fitted with a lanyard and should be safely secured close to the pump.

Gusher 10 output at 1m Lift and 0.5m Head

Ouput	At 60 strokes/min	At 70 strokes/min
Gallons/min	16	20
Litres/min	74	71

Fig 3: Performance table

Performance data is based on factory tests and is typical of what may reasonably be achieved. Actual performance may vary depending on installation and operating conditions.

MAINTENANCE

Inspection:

Regular inspection of the pump is recommended. Rubber components should be replaced if worn or every three years regardless of condition.

Replacement components and service kits (AK3706 for Neoprene (clean bilge water) and AK3714 for Nitrile (oily bilge water) are available from your local chandlery. It is recommended a service kit is kept on board.

Winterising

At the end of the season, drain all water in the pipework and pump chamber.

Changing the Diaphragm and Valves

1. Slacken and remove the wormdrive clip to release the diaphragm
2. Release diaphragm nut and remove diaphragm plates and diaphragm
3. Replace old inlet and outlet valves. Note: both inlet and outlet valves are same shape. The service kits contain two sets of valves - round ones for the MK 2 pump and square valves for the MK 3 pump. DO NOT mix the valve types!
4. Replace diaphragm and tighten wormclip in position and test for correct priming and discharge

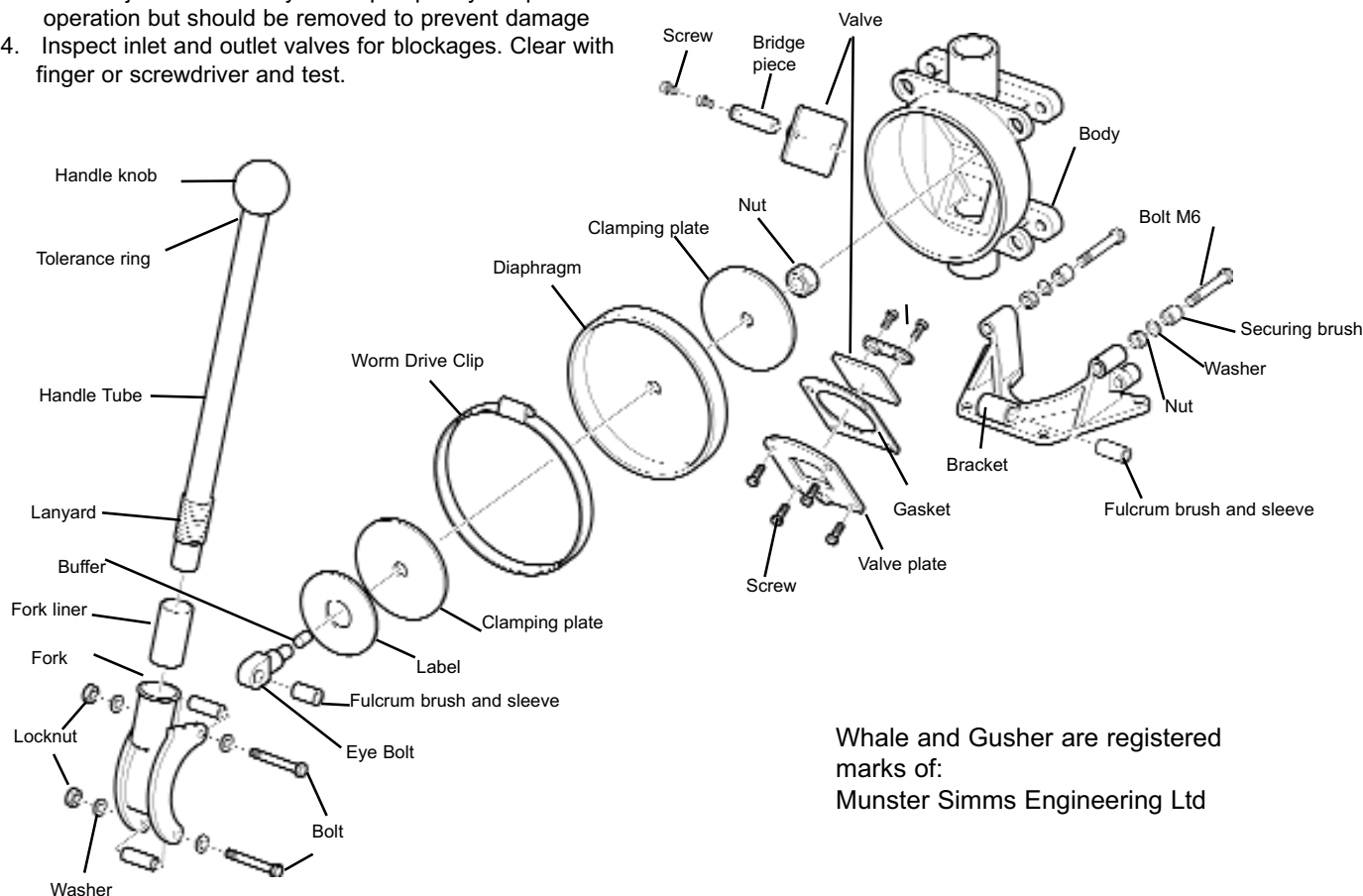
ACCESSORIES

DP3804 - Alloy deck plate with lid
DP8903 - Plastic deck plate
AK3706 - Neoprene Spares Kit
AK3714 - Nitrile Spares Kit
SF5425 - Skinfitting
SB5865 - Top entry strainer
SB4222 - Side entry strainer
DV5606 - 2 way diverter valve
EB3488 - 90° elbow (male to female)
LV1215 - In line non return valve

HELPFUL HINTS

Pump fails to prime or chokes:

1. Check inlet hose connection is airtight, free from blockages and does not collapse during suction stroke
2. Inspect diaphragms - replace if damaged
3. Solid objects in the body of the pump may not prevent its operation but should be removed to prevent damage
4. Inspect inlet and outlet valves for blockages. Clear with finger or screwdriver and test.



WARRANTY

Whale Pumps are guaranteed for 5 years (1 year on rubber parts) from date of purchase against defects in materials and workmanship. If the unit proves faulty return it to your supplier with proof of purchase and purchase date.

The manufacturer retains the right to repair or replace the unit.

The manufacturer cannot be held responsible for claims arising from the incorrect installation, unauthorised modification or misuse of the product.

The above does not affect your statutory rights.

Whale and Gusher are registered marks of:
Munster Simms Engineering Ltd