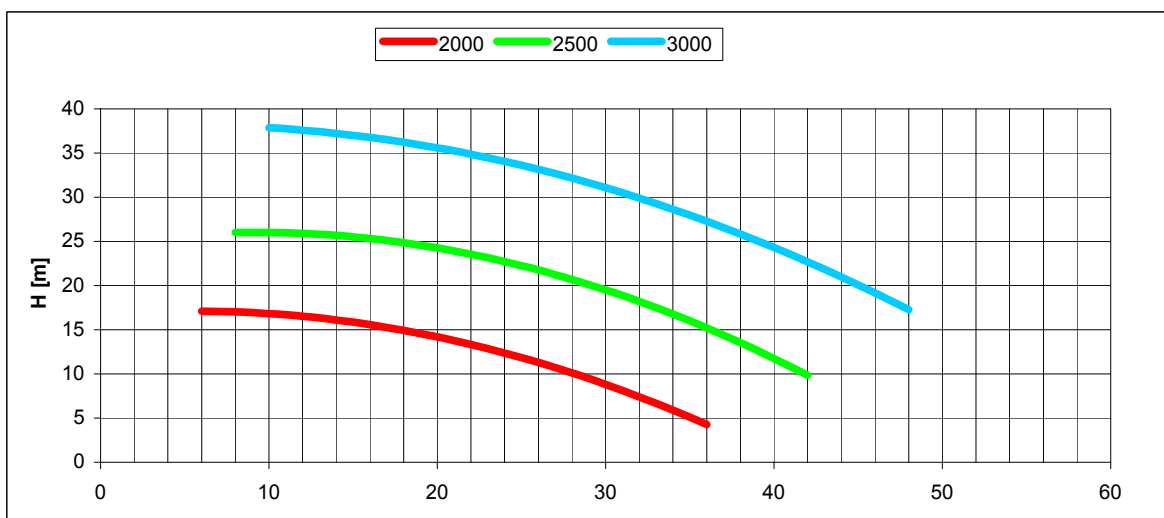
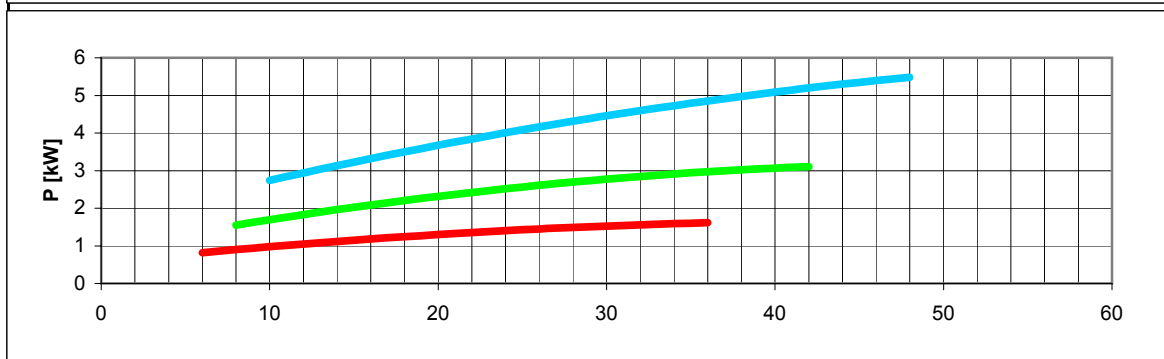


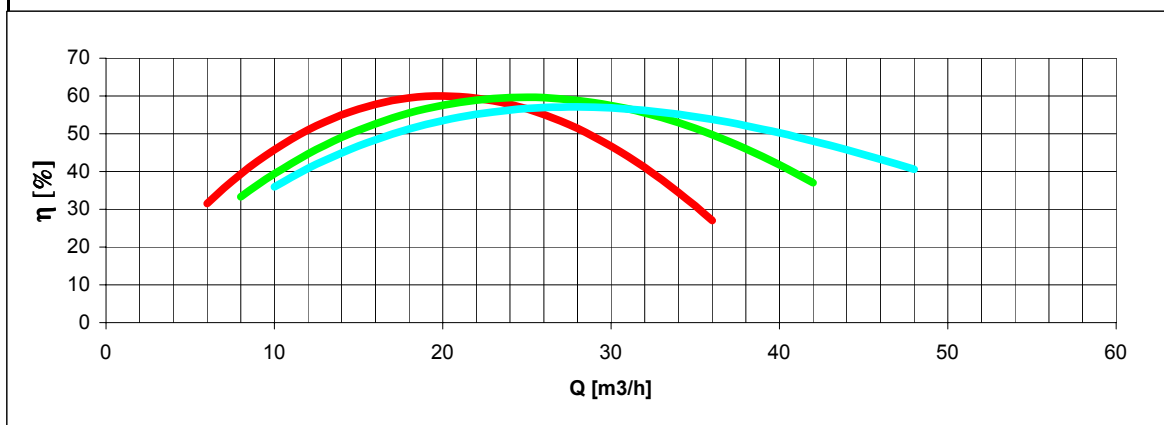
Tolleranze secondo ISO 2548 classe C	Autoinnescante/Selfpriming		Tolerances according ISO 2548 C class
Velocità di rotazione [giri/min]	2000-2500-3000		Rotating speed [rpm]
Densità dell'acqua alla prova	1000	kg/m ³	Water density at test
Passaggio corpi solidi (max diametro sfera)	8	mm	Solid handling (max.diameter sphere)
Diametro girante	169	mm	Impeller diameter
Inerzia delle masse rotanti (innesto inserito)	0.01476	Kgm ²	Inerthia of rotating parts (engaged clutch)
Tensione C.C. richiesta dalla bobina	24	V	D.C. voltage required from clutch winding
Corrente assorbita dalla bobina	1.2	A	D.C. current required from clutch winding
Altezza di innesco massima a 3000 giri/min	5.5	m	Maximum priming lift at 3000 rpm
Massa della pompa	37	kg	Pump mass



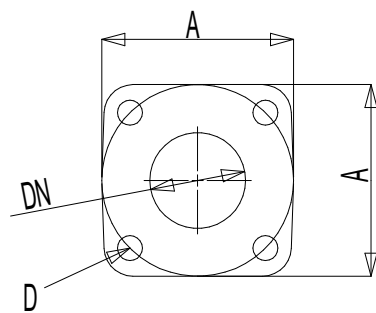
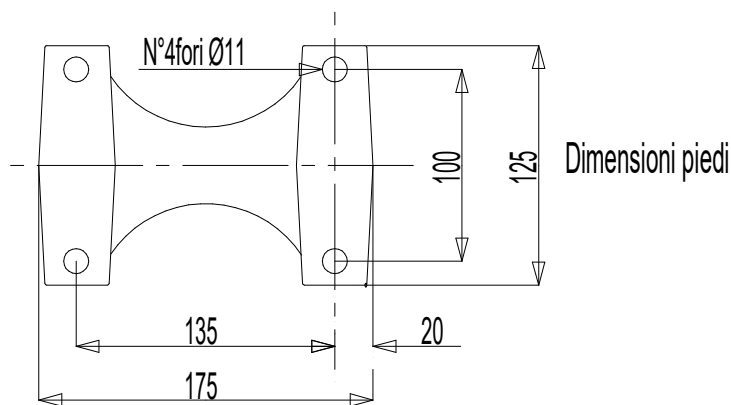
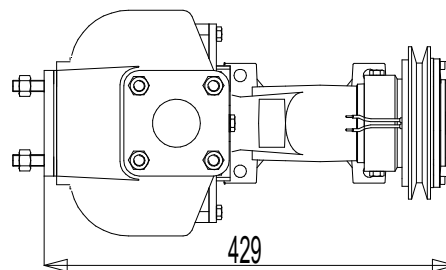
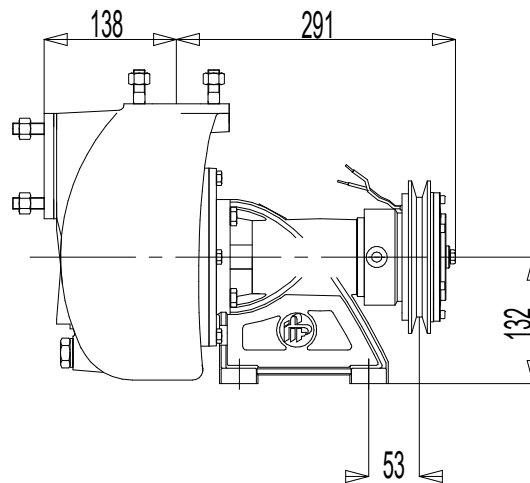
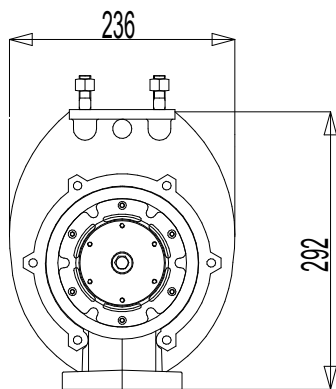
H(Q)
Prevalenza totale
Total head



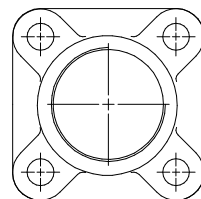
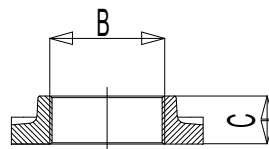
P(Q)
Potenza richiesta
Required power



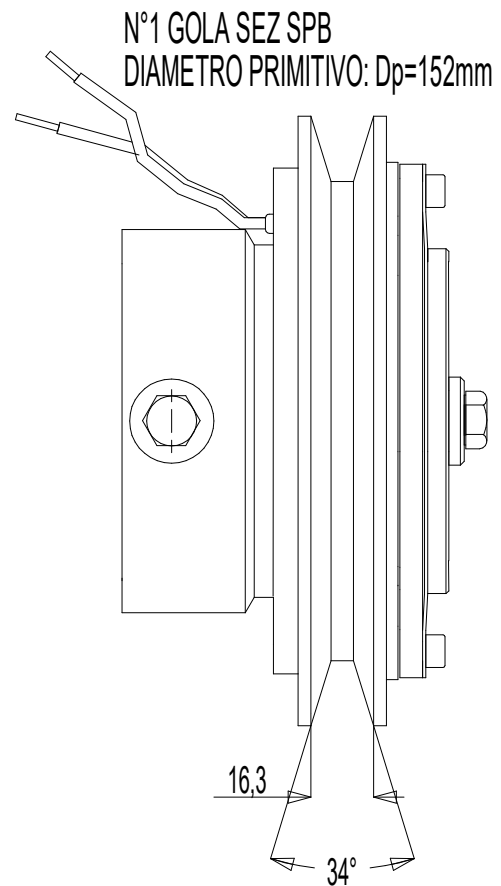
η
Rendimento pompa
Pump efficiency



Flange sulla pompa



Controflange filettate



	DN	A	B	C	D
Mandata	50	110	2"	26	Prigioniero M12
Aspirazione	65	110	2"1/2	30	Prigioniero M12